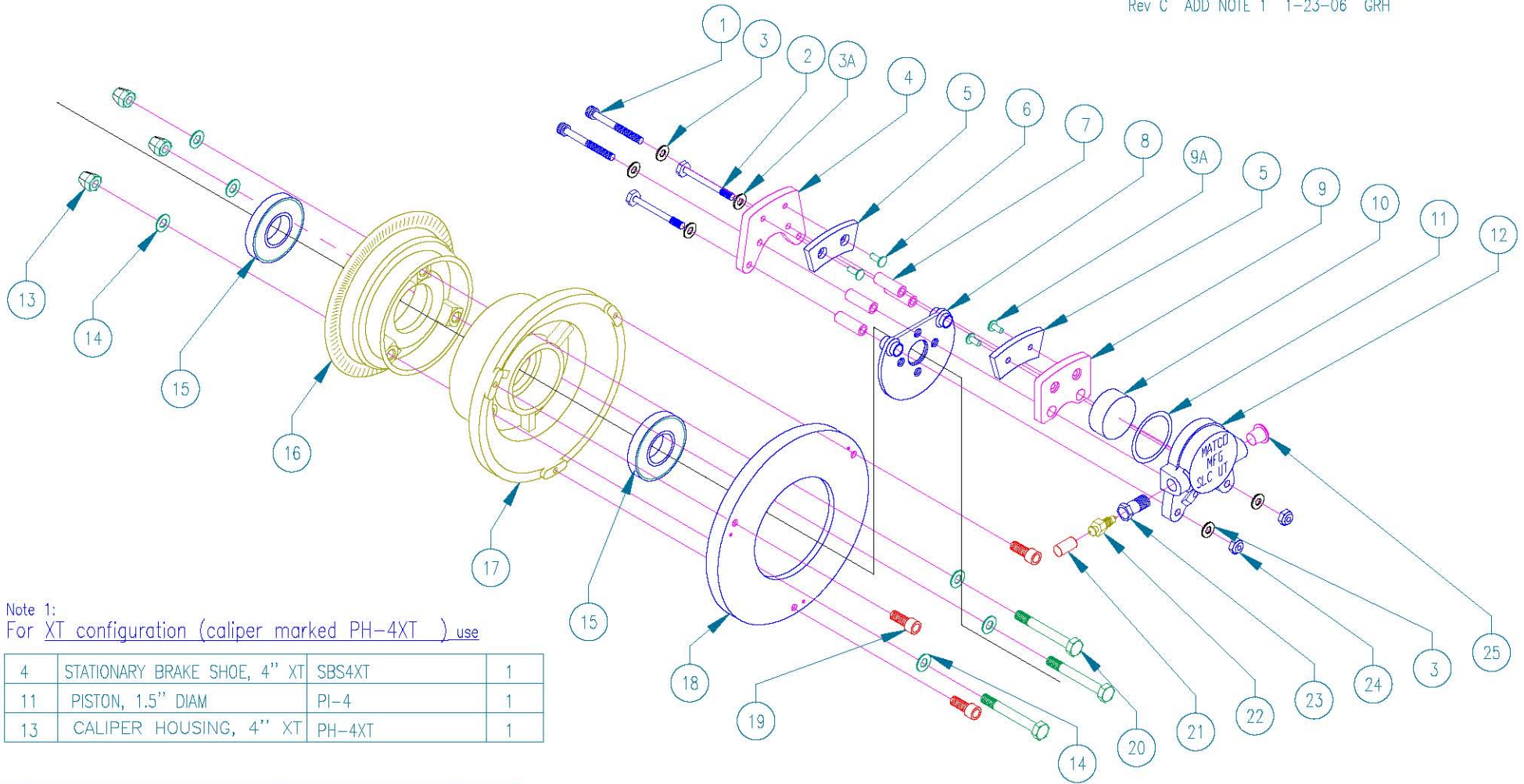


REV A UPDATE AN4-22A TO AN3-20A 2/16/01 GRH  
 REV B CORRECT PART LIST TO BOM 8/01/02 AWH  
 Rev C ADD NOTE 1 1-23-06 GRH



Note 1:  
 For XT configuration (caliper marked PH-4XT ) use

4	STATIONARY BRAKE SHOE, 4" XT	SBS4XT	1
11	PISTON, 1.5" DIAM	PI-4	1
13	CALIPER HOUSING, 4" XT	PH-4XT	1

1	SHCS, DRILLED (TORQUE TO 50 IN. LBS.)	10-24X1.75SHCS(A)	2	9A	BRASS RIVET	4-4	2	18	BRAKE DISC, 4" BRAKE	D4	1
2	SHCS	AN3-16A	2	10	PISTON 4" BRAKE	PI-2	1	19	SHCS, DRILLED (TORQUE 40 IN. LBS.)	10-24X.75SSHCS(A)	3
3	WASHER	AN960-10L	4	11	O-RING BUNA N	2-218	1	20	BOLT	AN3-20A	3
3A	WASHER	AN960-10	2	12	PUCK HUSING, 4" BRAKE	PH-2	1	21	DUST PLUG	.234-.50IL	1
4	STATIONARY BRAKE SHOE, 4"/UL	SBS4	1	13	FLEX LOCK NUT 10-32 (TORQUE 50 IN. LBS.)	MS21045-3	3	22	BRAKE BLEEDER VALVE	F6446-007	1
5	LINING, 4"/UL	M66-103A	2	14	WASHER	AN960-10L	6	23	BRAKE BLEEDER SEAT	BBS(A)	1
6	BRASS RIVET	4-6	2	15	BEARING, BALL .625	SKF1628DCTN	2	24	LOCK NUT (TORQUE TO 50 IN. LBS.)	10-24NYLOC	2
7	SPACER, 4"/UL	BSP4	4	16	VALVE HALF 4" WHL .625 BRNG	W40/.625	1	25	CAPLUG	2X	1
8	BRAKE PLATE, .75	BPA.75	1	17	BRAKE HALF 4" WHL. 625 BRNG	B40/.625	1				
9	MOVEABLE BRAKE SHOE, 4"/UL	MBS4	1								
NO.	PART NAME	INVENTORY NO.	REQ'D	NO.	PART NAME	INVENTORY NO.	REQ'D	NO.	PART NAME	INVENTORY NO.	REQ'D

3D-WH40  
 MATCO mfg  
 2361 S 1560 West  
 WOODS CROSS, UT 84087 (801) 335-0582

W40B

DRAWN BY: GARY P. LANGFORD  
 AUTHORIZED BY:

SCALE: NONE  
 DATE: APRIL 16, 2001

REVISION:  
 C