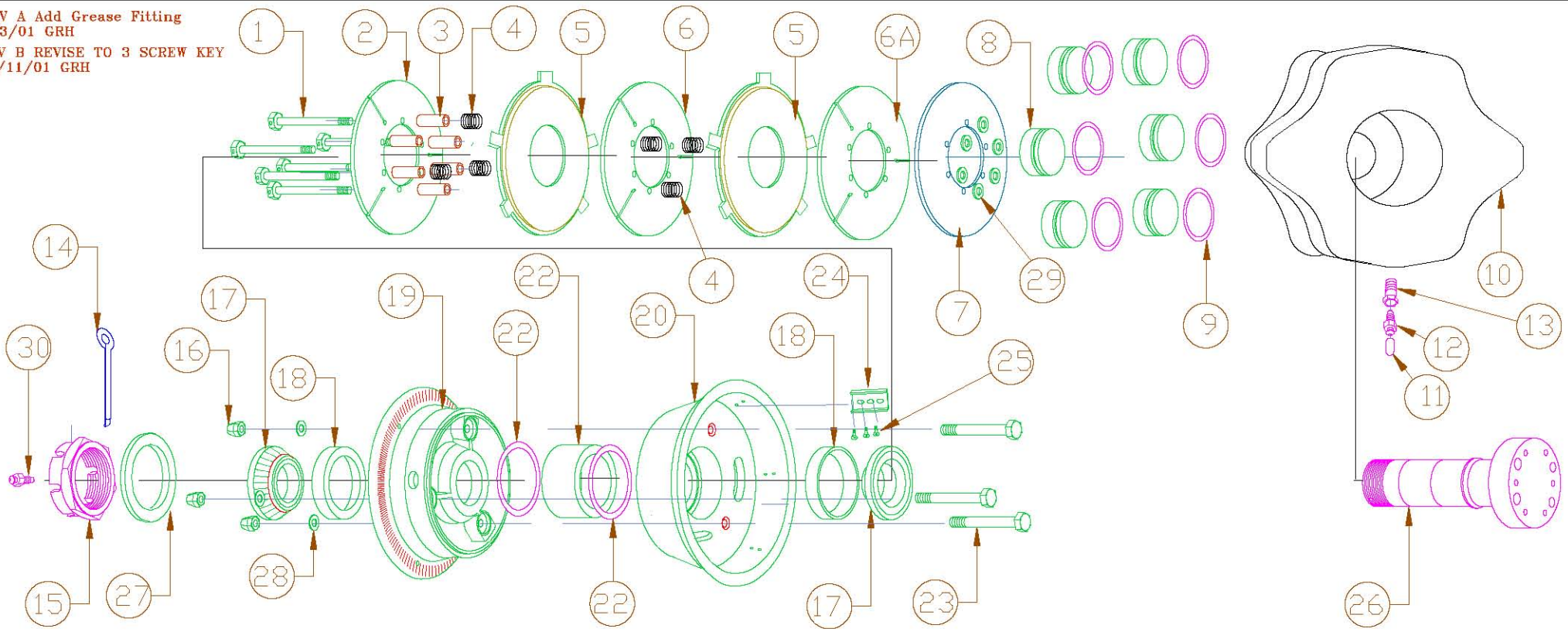


REV A Add Grease Fitting  
7/3/01 GRH  
REV B REVISE TO 3 SCREW KEY  
11/11/01 GRH



NO.	PART NAME	INVENTORY NO.	REQ'D
1	BOLT, DRILLED (TORQUE TO 50 IN. LBS.)	MSCAN4C-24	6
2	STATOR, BACK PLATE	WHLDS323S-1	1
3	SPACER	WHLBSP323S	6
4	SPRING, NEW BRAKE	MSCLC045G01S	6
5	ROTOR	WHLDR323	2
6	STATOR	WHLDS323S-2	1
6A	STATOR, PRESSURE PLATE	WHLDS323S-3	1
7	INSULATOR	WHLDI323S	1
8	PISTON, W323	WHLPI-323	6
9	O-RING BUNA N	MSC2-218	6
10	PISTON HOUSING	WHLPH-323	1
11	DUST PLUG	MSC.234-.50IL	1
12	BRAKE BLEEDER VALVE	F6446-007	1
13	BRAKE BLEEDER SEAT	BBS(A)	1

NO.	PART NAME	INVENTORY NO.	REQ'D	NO.	PART NAME	INVENTORY NO.	REQ'D
14	COTTER PIN ZINC	.125X2.0COTTERPIN	1	23	BOLT, SH FLAT	MSCAN5C-25A	3
15	AXLE NUT, 1.50X16 SHORT	AN6S	1	24	KEY, WHEEL	WHLK323S	5
16	FLEX LOCK NUT SS, .25-28 (TORQUE 125 IN. LBS)	AN363C-524	3	25	SCREW, FLT HD	MSC8-32X.3125	15
17	ROLLER BEARING, 1.50	LM2900LA	2	26	AXLE, 1.5 X6.5, W323	WHLA15M	1
18	BEARING RACE, 1.50	LM29710	2	27	WASHER	MSCTRA2435	1
19	VALVE HALF, W323S, 1.50 BRNG	W323S/1.50	1	28	WASHER	MSCAN960C-516L	3
20	BRAKE HALF, W323S, 1.50 BRNG	B323S/1.50	1	29	WASHER	MSCAN960C-416L	6
21	O-RING BUNA N	MSC2-138	2	30	FITTING, GREASE	MSC11-151	1
22	SLEEVE, GREASE	WHLPVC-323	1				